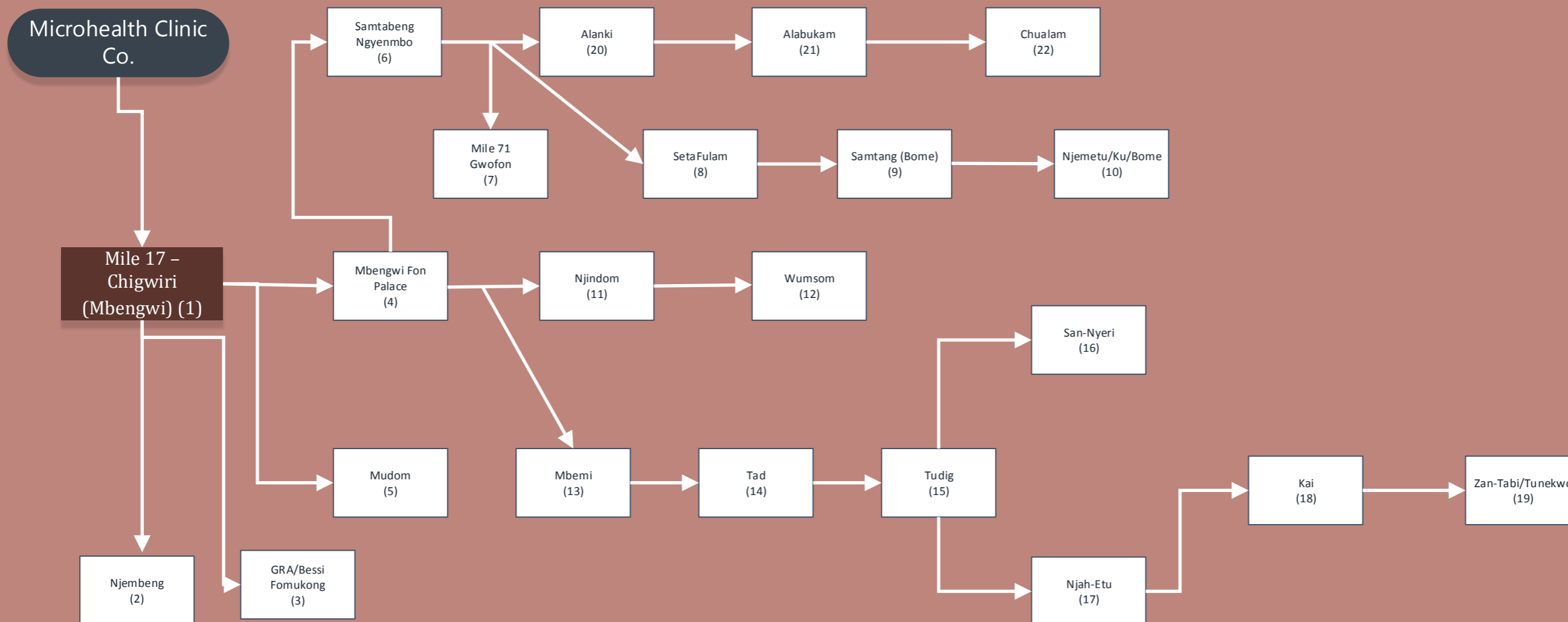


MBENGWI DISTRICT MOBILE DENTAL CARE STOPS



<p>POPULATION COVERAGE VILLAGES REGISTERED STATS ADULT 55,000 ADDITIONAL COVERAGE: CHILDREN/PRE-TEENS/TEENS/DISTRICT STUDENTS AND OUT OF DISTRICT STUDENTS: APPROXIMATELY 55,000</p> <p>TOTAL COVERAGE: 110,000 PEOPLE</p> <p>3 DAYS PER STOP (SEE SERVICES) MONDAY - FRIDAY</p>	<p>MBENGWI DISTRICT AND NEIGHBORING DISTRICTS MOBILE DENTAL CARE STOPS</p> <p>SERVICES/TRAVEL PRE-SCREEN TREATMENT/CLEANING REFERRALS EDUCATION DOCUMENTATION/REFILLS ===> STAFF REVIEW/TRAINING <=== TAKE PLACE AT MH-GC CLINIC CENTER</p>
---	---